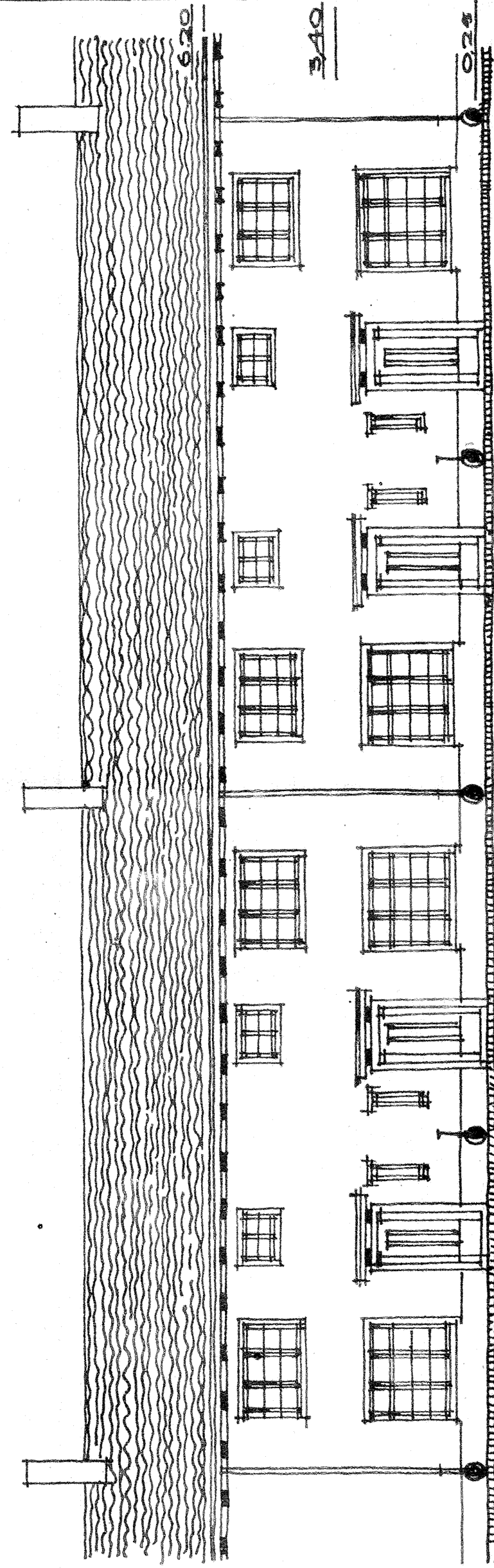
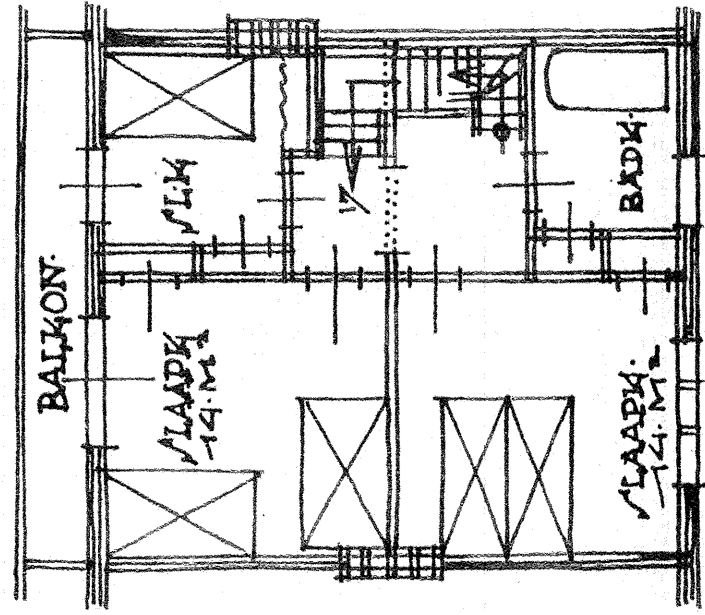


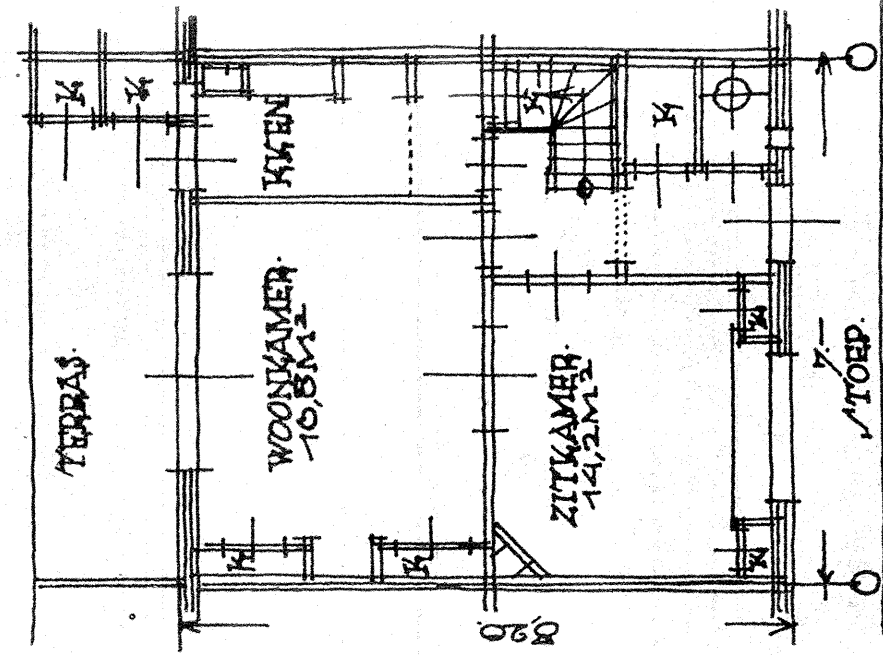
TUNSTADWIK  
DAALENBERG



GEVELAANZICHT



VAN DE BODEN



BEGANE GROND

TUPE

REBOUWDE OPPERVLACHT = 57.5 M.<sup>2</sup>  
INHOUDE (VANAF -0.25 M') = 45.5 M.<sup>3</sup>

CHAAL 1:100

IR. GR. ANDRÉ MOÏÈRE-EN YSERHAGEN  
ARCHITECTEN ROTTERDAM - JULI 1918